

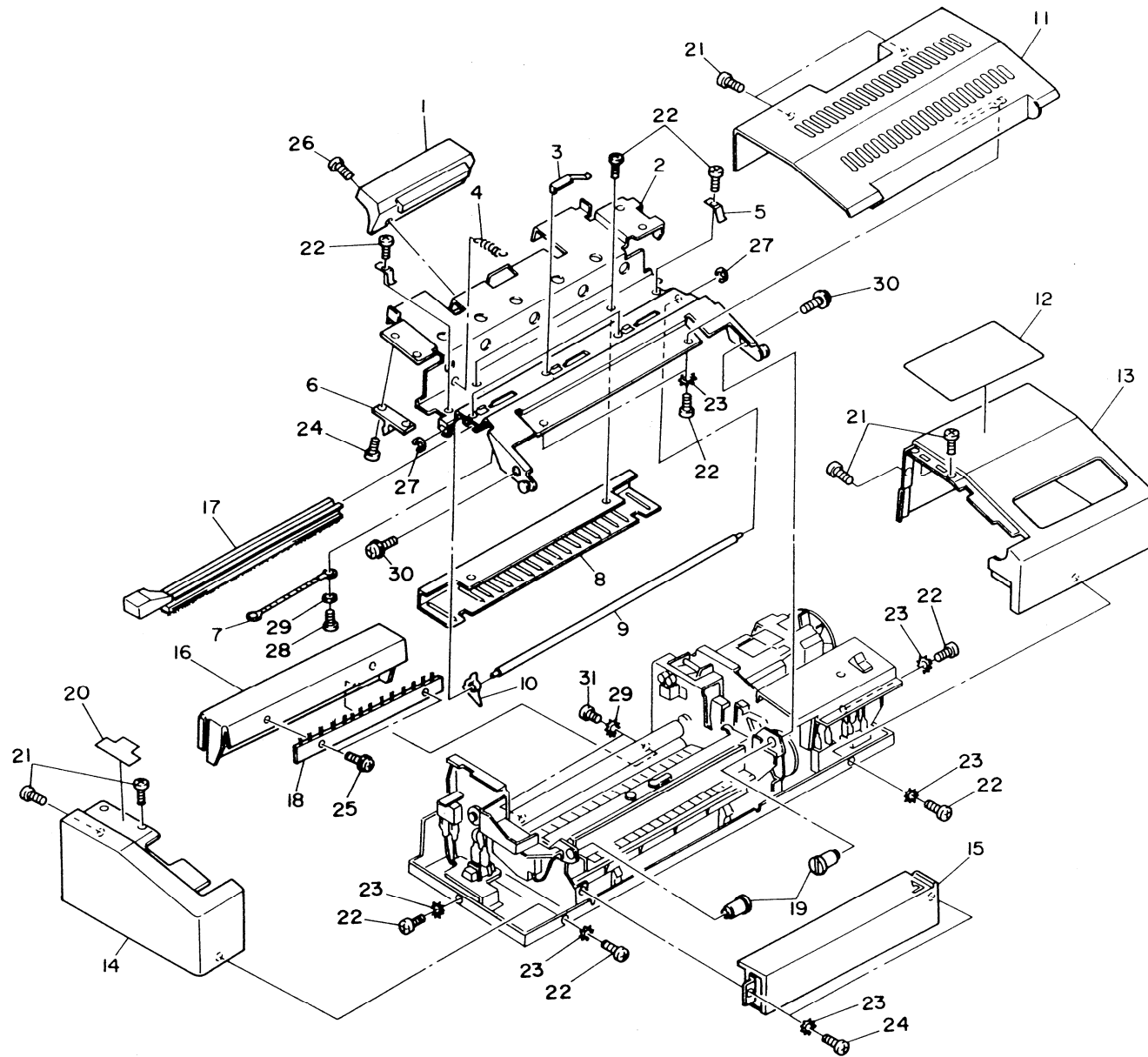
**TP FUSER I (A963)**

**Section 1. Part Location and List**

1. Exterior (A963) .....	1— 2
2. Fusing Section (A963) .....	1— 4
3. Drive Section (A963) .....	1— 6
4. Frame (A963) .....	1— 8
<b>Section 2. Parts Index</b> .....	<b>2— 1</b>

# 1. EXTERIOR (A963)

January 25, '90



# 1. EXTERIOR (A963)

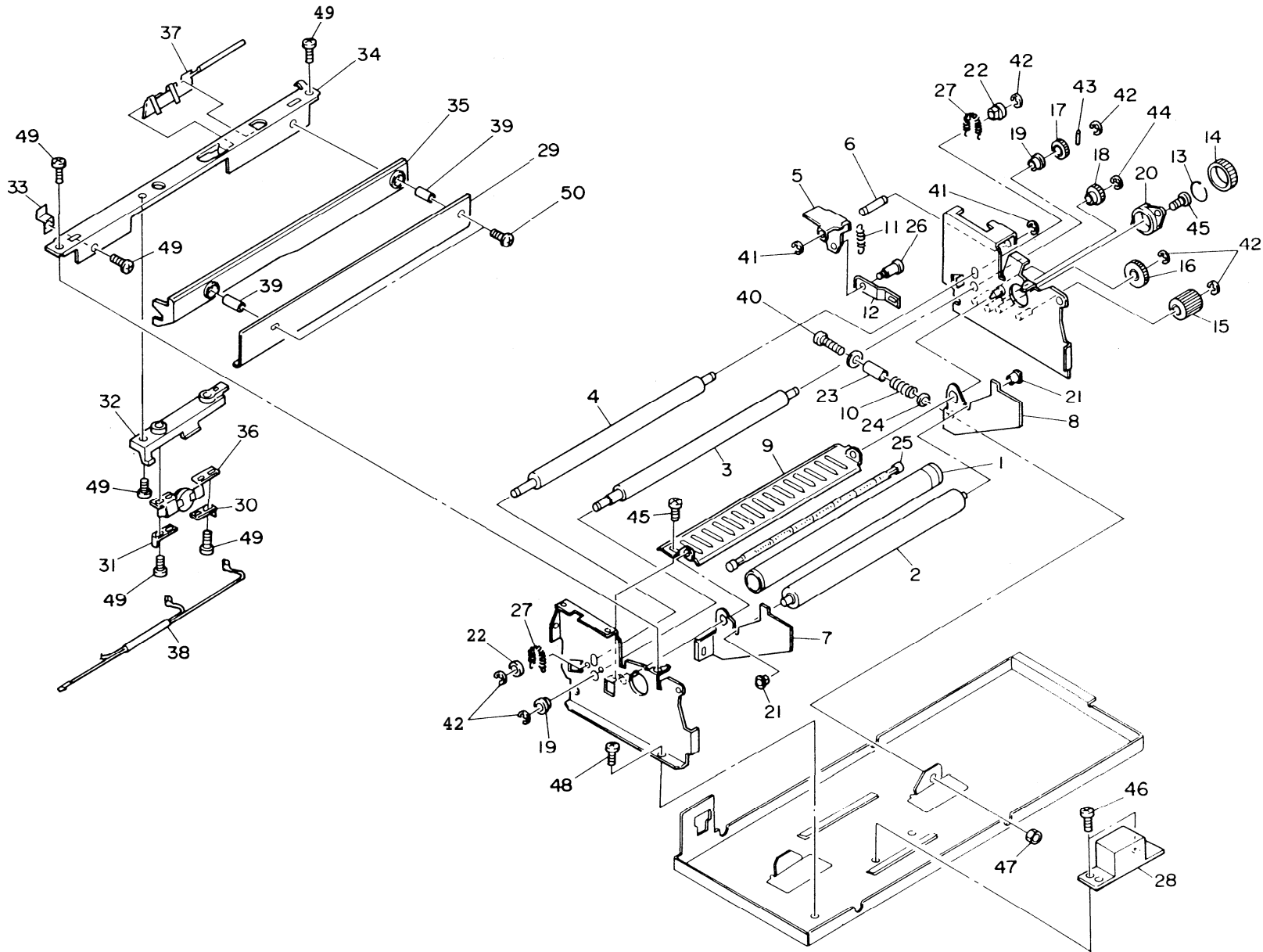
January 25, '90

Index No.	Parts No.	Description	Qty Per Assembly
1	VFE6 0507	Knob	1
2	VFF1 5563	Upper Plate	1
3	VFA2 5963	Leaf Spring	3
4	VFS1 2833	Tension Spring	1
5	VFA2 5962	Leaf Spring	2
6	VXZ9 0124	Latch - Insert	2
7	VFL9 0033	Earth Cable	1
8	VFA3 5308	Upper Delivery Guide	1
9	VFA2 5961	Claw Shaft	1
10	VFA2 5938	Separation Claw	1
11	VFE6 0506	Upper Cover	1
12	VFS0 8302	Label - Operation - 115V, 240V	1
12	VFS0 8501	Label - Operation - 220V	1
13	VFE6 0504	Right Cover	1
14	VFE6 0505	Left Cover	1
15	VFE6 0502	Front Cover	1
16	VFE6 0503	Rear Cover	1
17	VFM6 0163	Cleaning Felt	1
18	VRA1 1000	Antistatic Brush	1
19	VFA3 5285	Upper Cover Pivot	1
20	VFS0 8304	Label - Caution	2
21	VFE6 0511	Screw	
22	0353 0060W	Philips Bind Head Screw - M3x6	
23	0705 0030C	Toothed Washer - M3	
24	0313 0040W	Philips Pan Head Screw - M3x4	
25	0960 3004W	Philips Flange Screw - M3x4	
26	VFE6 0321	Screw	
27	0720 0040E	Retaining Ring - M4	
28	0314 0040E	Philips Pan Head Screw - M4x4	
29	0705 0040C	Toothed Washer - M4	
30	0960 4008W	Philips Flange Screw - M4x8	
31	0354 0060W	Philips Bind Head Screw - M4x6	

Index No.	Parts No.	Description	Qty Per Assembly
-----------	-----------	-------------	------------------

# 2. FUSING SECTION (A963)

January 25, '90



## 2. FUSING SECTION (A963)

January 25, '90

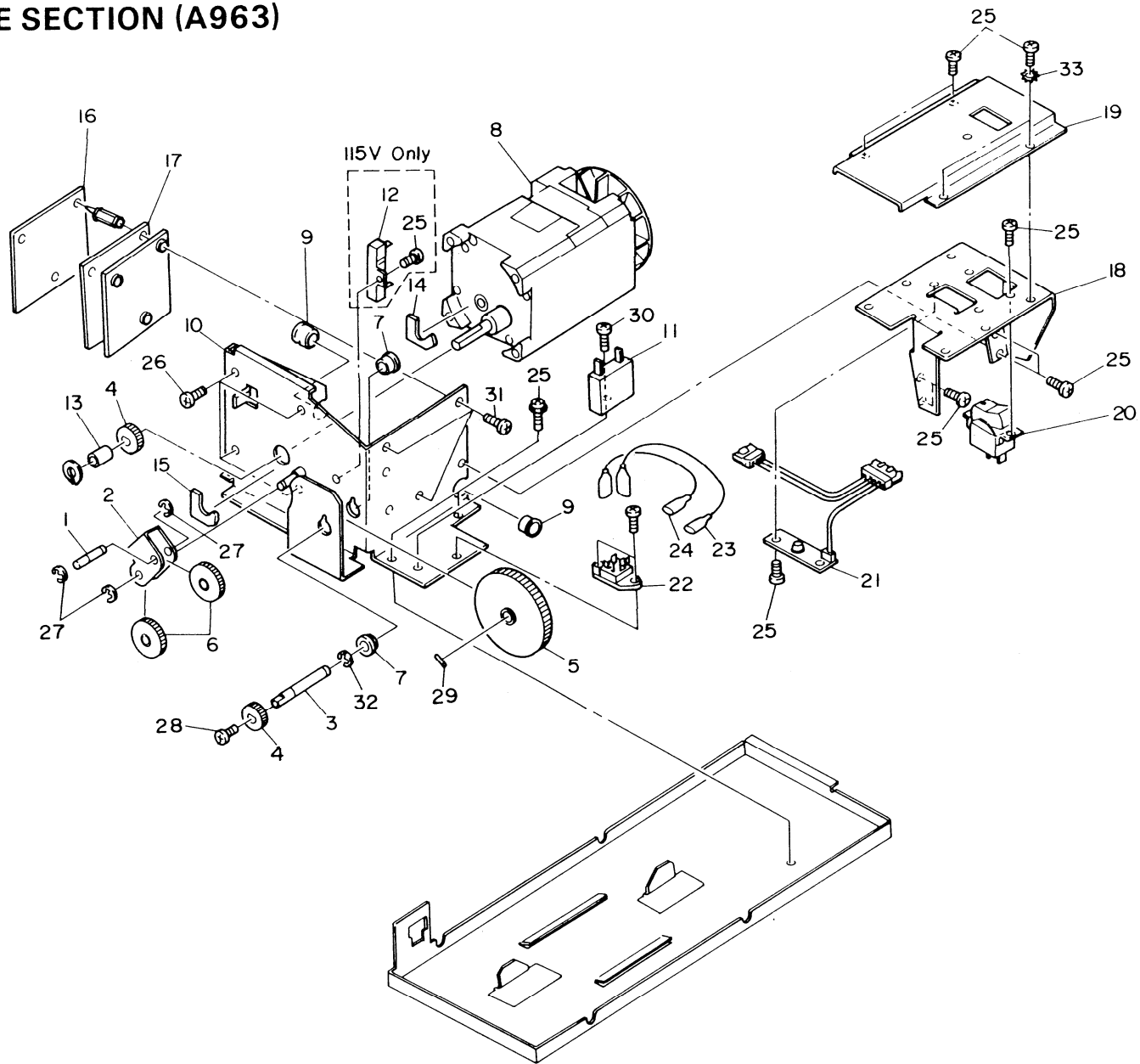
Index No.	Parts No.	Description	Qty Per Assembly
1	VFA3 5269	Hot Roller	1
2	VFA3 5270	Pressure Roller	1
3	VFA3 5271	Lower Exit Roller	1
4	VFA3 5272	Upper Exit Roller	1
5	VFA3 5273	Release Lever	1
6	VFA3 5274	Lever Shaft	1
7	VFA3 5282	Left Lifting Plate	1
8	VFA3 5,283	Right Lifting Plate	1
9	VFA3 5286	Paper Feed Guide	1
10	VFS2 2236	Pressure Spring	2
11	VFS2 2237	Tension Spring	1
12	VFA3 5294	Release Arm	1
13	VFA2 5971	Retaining Ring	3
14	VFS1 0712	Gear - 30Z	1
15	VFS1 0715	Gear - 23Z	1
16	VFS1 0716	Gear - 26Z	1
17	VFS1 0734	Gear - 17Z	1
18	VFS1 0946	Gear - 18Z	2
19	VFS1 1202	Bushing	2
20	VFS1 1203	Bushing	2
21	VFS1 1204	Bushing	2
22	VFS1 1158	Bushing	2
23	VXZ9 0223	Spacer	2
24	VFA1 3642	Bushing	2
25	VFH7 4121	Fusing Lamp - 115V	1
25	VFH7 4122	Fusing Lamp - 220V	1
25	VFH7 4123	Fusing Lamp - 240V	1
26	VFA2 5970	Shoulder Screw - M3	1
27	VFS1 2511	Spring	2
28	VFE9 0040	Transformer - 220/240V	1
29	VFA3 5287	Upper Feed Guide - Front	1
30	VFA2 9818	Rear Terminal	1
31	VFA2 9819	Front Terminal	1
32	VFA2 9820	Thermoswitch Mount	1
33	VFA2 9821	Cord Clamp	1

Index No.	Parts No.	Description	Qty Per Assembly
34	VFA2 9822	Upper Stay	1
35	VFA2 9823	Upper Feed Guide	1
36	VFH7 7041	Thermoswitch	1
37	VFH7 9126	Thermistor	1
38	VFF1 4305	Thermoswitch Cable	1
39	VXZ1 1300	Spacer	2
40	VXA9 0273	Pan Head Screw - M5 x 20	2
41	0720 0030E	Retaining Ring - M3	
42	0720 0070E	Retaining Ring - M7	
43	0632 0100G	Parallel Pin - 2x10mm	
44	0720 0050E	Retaining Ring - M5	
45	0313 0040W	Phillips Pan Head Screw - M3x4	
46	0314 0040W	Phillips Pan Head Screw - M4x4	
47	0710 00508	Hexagon Nut - M5	
48	0960 3004W	Phillips Flange Screw - M3x4	
49	0353 0060W	Phillips Blind Head Screw - M3x6	
50	0313 0100W	Phillips Pan Head Screw - M3x10	



### 3. DRIVE SECTION (A963)

January 25, '90



### 3. DRIVE SECTION (A963)

January 25, '90

Index No.	Parts No.	Description	Q'ty Per Assembly
1	VFA3 5322	Shaft	1
2	VFA3 5323	Gear Arm	1
3	VFA3 5325	Gear Shaft	1
4	VFS1 0080	Gear - 152	2
5	VFS1 0208	Gear - 542	1
6	VFS1 0724	Gear - 242	2
7	VFS1 1202	Bushing	2
8	VFH7 1337	Motor - 115V	1
8	VFH7 1338	Motor - 200/240V	1
9	VWT2 0212	Bushing	2
10	VFF1 5565	Motor Mount	1
11	A963 9500	Capacitor - 3.5-F 200V - 115v	1
11	A963 9501	Capacitor - 1.5uF 430V - 220V	1
11	A963 9502	Capacitor - 240V	1
12	VVR9 9015	Resistor - 1Kn 10W - 115V	1
13	VXZ9 0220	Spacer	1
14	VFA9 1716	Pad	1
15	VFA9 1679	Pad	1
16	VFG1 4272	Distribution Board Ass'y - 115v	1
16	VFG1 4273	Distribution Board Ass'y - X?0/240v	1
17	VFG1 4274	Control Board Ass'y	1
18	VFA3 5336	Switch Mount	1
19	VFE6 0510	Control Panel	1
20	VFE9 0039	Switch	1
21	VFF1 5579	LED Board	1
22	VWA5 0068	Triac - 115V	1
22	VWA5 0067	Triac - 220/240V	1
23	VFF1 5580	Cable - H1-Q1	1
24	VFF1 5575	Cable - 0S-Q1	1
25	0353 0060W	Phillips Bind Head Screw - f43x6	
26	0354 0080W	Phillips Bind Head Screw - <b>M4x8</b>	
27	0720 0040E	Retaining Ring - M4	
28	0960 3010W	Phillips Flange Screw - M3x10	
29	0632 0160G	Parallel Pin - 2x16mm	
30	0354 0060W	Phillips Bind Head Screw - <b>M4x6</b>	

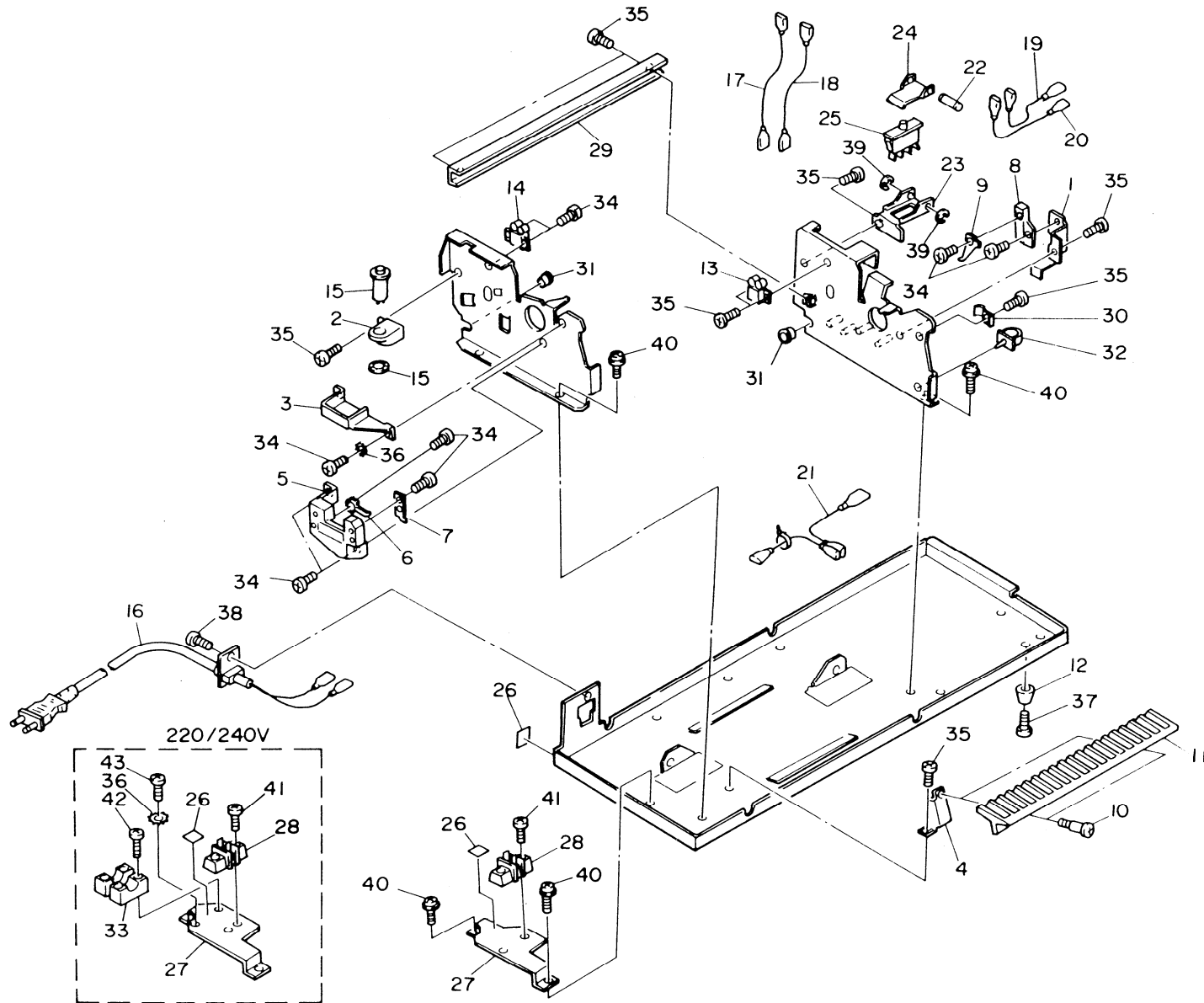
Index No.	Parts No.	Description	Q'ty Per Assembly
31	0434 0140W	Tapping Screw - M4x14	
32	0720 0070E	Retaining Ring - M7	
33	0705 0040C	Toothed Washer - M4	





# 4. FRAME (A963)

January 25, '90



### 4. FRAME (A963)

January 25, '90

Index No.	Parts No.	Description	Q'ty Per Assembly
1	VFA3 5275	Heater Terminal - Plate	1
2	VFA3 5277	Circuit Breaker Bracket - 115V	1
2	VFA3 5278	Circuit Breaker Bracket - 220/240V	1
3	VFE6 0501	Cover	1
4	VFA3 5293	Entrance Guide Bracket	2
5	VFA2 5964	Fuse Holder	1
6	VFA2 9824	Fusing Lamp Terminal - Front	1
7	VFA9 0236	Terminal	1
8	VFA2 5967	Mount	1
9	VFA2 5968	Fusing Lamp Terminal - Rear	1
10	VFA2 5970	Shoulder Screw - M3	3
11	VFA2 5948	Lower Paper Guide	1
12	VXH9 0051	Rubber Foot	4
13	VXZ9 0029	Latch Receiver	1
14	VXZ9 0125	Roller Catch	1
15	VWD3 0063	Circuit Breaker - 115V	1
15	VWD3 0064	Circuit Breaker - 220/240V	1
16	VFH2 5088	Power Supply Cord - 115V	1
16	VFE6 0603	Power Supply Cord - 220V	1
16	VFE6 0601	Power Supply Cord - 240V	1
17	VFF1 5576	Cable - CBI-DS	1
18	VFF1 5577	Cable - TB-CBI - 220/240V	1
19	VFF1 5572	Cable - TB-DS - 115V	1
19	VFF1 5578	Cable - TB-DS - 220/240V	1
20	VFF1 5573	Cable - D8-SW	1
21	VFF1 5574	Cable - SWI-HI	1
22	VFA3 5274	Lever Shaft	1
23	VFA3 5341	Door Switch Plate	1
24	VFA3 5343	Door Switch Lever	1
25	VMC2 0137	Interlock Switch	1
26	VFA2 5438	Label - Ground	1
27	VFA3 5348	Power Supply Mount - 115V	1
27	VFA3 5349	Power Supply Mount - 220/240V	1
28	VWT1 0257	Terminal	1
29	VFA3 5292	Eliminator Guide	1

Index No.	Parts No.	Description	Q'ty Per Assembly
30	VFA2 5981	Cord Clamp	1
31	VWT2 0212	Bushing	2
32	VWT2 0247	Cable Clamp	1
33	VEA1 1497	Cord Clamp - 220/240V	1
34	0353 0060W	Phillips Bind Head Screw	
35	0353 0040W	Phillips Bind Head Screw	
36	0705 0040C	Toothed Washer - M4	
37	0960 3010W	Phillips Flange Screw - M3x10	
38	0960 3006W	Phillips Flange Screw - M3x6	
39	0720 0030E	Retaining Ring - M3	
40	0960 3004W	Phillips Flange Screw - M3x4	
41	0314 0160W	Phillips Pan Head Screw - M4x16	
42	0313 0120W	Phillips pan Head Screw - M3x12	
43	0354 0100W	Phillips Bind Head Screw - M4x10	